

Continuous Feed Inkjet Printer

RICOH Pro VC70000

RICOH
imagine. change.

✓ Printer



Pro VC70000

492
fpm full-color

Take command of your future with the inkjet solution the industry's been waiting for

Removing the previous barriers to print quality, productivity and cost-effectiveness, the award-winning RICOH Pro VC70000 Continuous Feed Inkjet Printer elevates your business today and provides a scalable, field-upgradable platform to protect your investment for years to come. Finally, a viable alternative to offset printing has arrived, delivering all the benefits of digital printing and powerful data-driven communications without sacrificing the affordable media choices, image integrity and speed of offset.

The RICOH Pro VC70000 provides powerful advantages for your business, including:

- New extended gamut inks make it possible to print onto a variety of different types of stocks, including offset coated and uncoated papers, without pre- or post-coating
- Media support for offset coated, IJ coated, IJ treated and uncoated papers from 40 to 250 gsm
- Ricoh's latest generation stainless steel printheads for years of dependable use
- Dynamic drop technology at the image level to render fine details, consistent half-tones and optimized ink usage on high coverage areas
- Production volumes up to 40 million impressions per month
- Repeatable print lengths of up to 54"
- Output speeds up to 492 ft/min
- Advanced drying and cockling correction technologies, which are required when printing on lightweight papers
- RICOH TotalFlow® Print Server R600A Digital Front End (DFE) for powerful job and data processing with support for multiple data streams, access to color management and additional job tools
- Unparalleled technical and field support from the industry's largest, dedicated production service organization



Redefine what's possible

The speed, media flexibility and color quality to migrate work from offset to digital intelligently and affordably

Solutions to get your bottom line soaring

Produce high-value, personalized and data-driven applications — from sales collateral and brochures to direct mail, catalogs, color manuals, custom publications and more — at speeds up to 492 feet per minute. Print on offset coated paper with no priming or pretreatment required to immediately achieve savings in media costs. Deliver true image quality up to 1200 × 1200 dpi with the latest generation, industry-leading Ricoh printheads to meet and exceed customer expectations on every job.



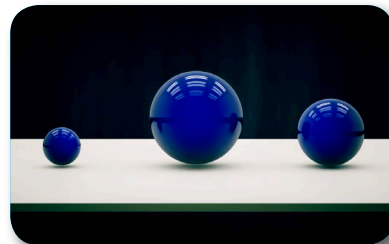
Reliably produce the colors you need with Ricoh's exclusive extended gamut inks

Further removing the barriers to transitioning jobs from offset are Ricoh's new, proprietary extended gamut inks. With a higher pigment-to-water ratio, these inks deliver superior adhesion and allow you to confidently produce more colors consistently, impression after impression and job after job.



Achieve finer detail and reduced ink usage with image-level variable drop sizes

While other inkjet systems can apply differing drop sizes at a page or file level, the RICOH Pro VC70000 gives you the power to vary them down to the pixel level. That means crisp, sharp text, improved grayscales and halftones, and efficient ink usage on high-coverage areas.



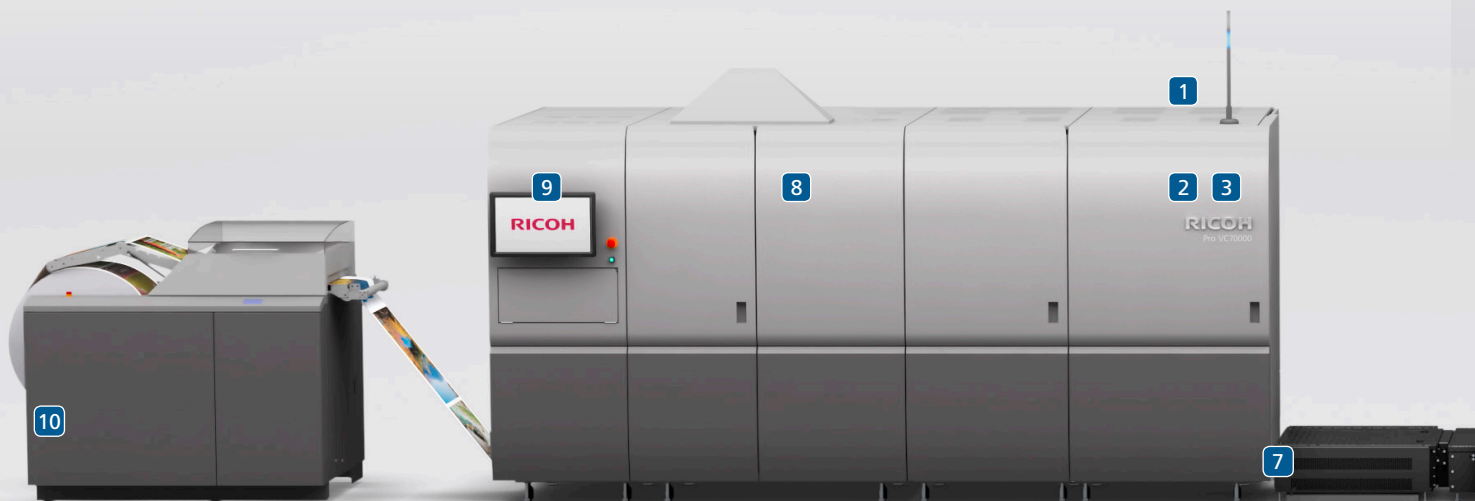
Get polished results with advanced drying technologies and built-in anti-cockling

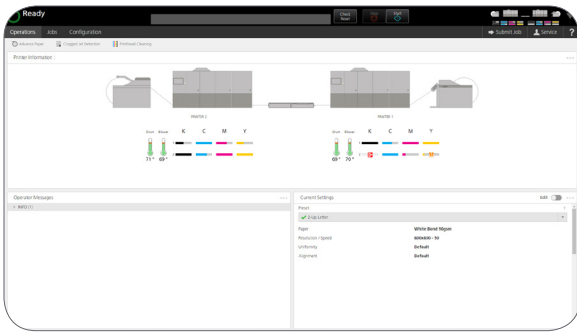
Innovative new drying technologies set and cure inks inline for outstanding results on offset coated papers and a wider variety of media while allowing for high-speed print production. For jobs requiring very light stocks, anti-cockling technology prevents media wrinkling in your output so you can take on an even broader mix of work where heavy ink coverage is required.



Innovative technology to deliver years of competitive advantage

- 1 Operator Attention Light:** Alerts operators about warnings, errors or when intervention is required while printing.
- 2 Print Unit:** Houses the cyan, magenta, yellow and black printhead arrays, paper steering mechanisms, bar code and finishing mark sensors.
- 3 Printhead Array:** The array for each color consists of 10 Ricoh 1200 dpi stainless steel piezo drop-on-demand printhead modules that are capable of dynamically jetting variable drop sizes. Each RICOH Pro VC70000 printhead housing can be pulled out to provide easy access for operator cleaning and maintenance. The printheads remain capped when the printer is not printing, and automatically are uncapped prior to printing. An operator can elect to park color printheads when printing monochrome for more cost-effective operation.
- 4 Ink Supply Station:** The Ink Supply Station houses two 10-liter cartridges for each color of ink. When a cartridge is near empty, the operator is notified that the cartridge needs to be replaced, and the operator can do so on-the-fly so the printer can continue to print.
- 5 Graphical User Interface (GUI):** Provides access to the RICOH TotalFlow® Print Server R600A DFE. The HTML 5 GUI layout is configurable to provide easy access to job setup/submission, job management, administration and maintenance control of the system.
- 6 RICOH TotalFlow® R600A Digital Front End:** With powerful data processing and intuitive operation, operators can control job management, system configuration, and maintenance tasks.
- 7 Turn Bar Unit for I or L Configurations:** The turn bar for I (inline) and L (left-angle) configurations turns the paper over in preparation for the second engine to print on the back side of the paper web.
- 8 Dryer Unit:** The RICOH Pro VC70000 Dryer Unit uses a new, radiant heat drum dryer in combination with heat rollers and air movement to remove the water content of the inks, curing only the colorant on the media and preparing it for printing on the second side or inline finishing. This new dryer technology supports printing on offset coated papers at up to 492 ft/min.
- 9 Image Inspection Unit:** The new Image Inspection Unit Lite is embedded into the Pro VC70000 Exit Unit and can reduce make-ready times by up to 70%. Fine-tune media handling and tensioning controls to help ensure every page is produced with uncompromising consistency. For quality assurance, a new high resolution strip camera system is used during the make-ready process to check for clogging, alignment and uniformity of print heads.
- 10 Support for a Variety of Finishing:** Choose from multiple Ricoh partners to provide a variety of finishing solutions, such as, unwind, rewind, cut, fold, dynamic perforation, vision systems and inline processing, plus a solution for books. And even though the finishing devices are from a Ricoh partner, Ricoh provides the service and support on those items.



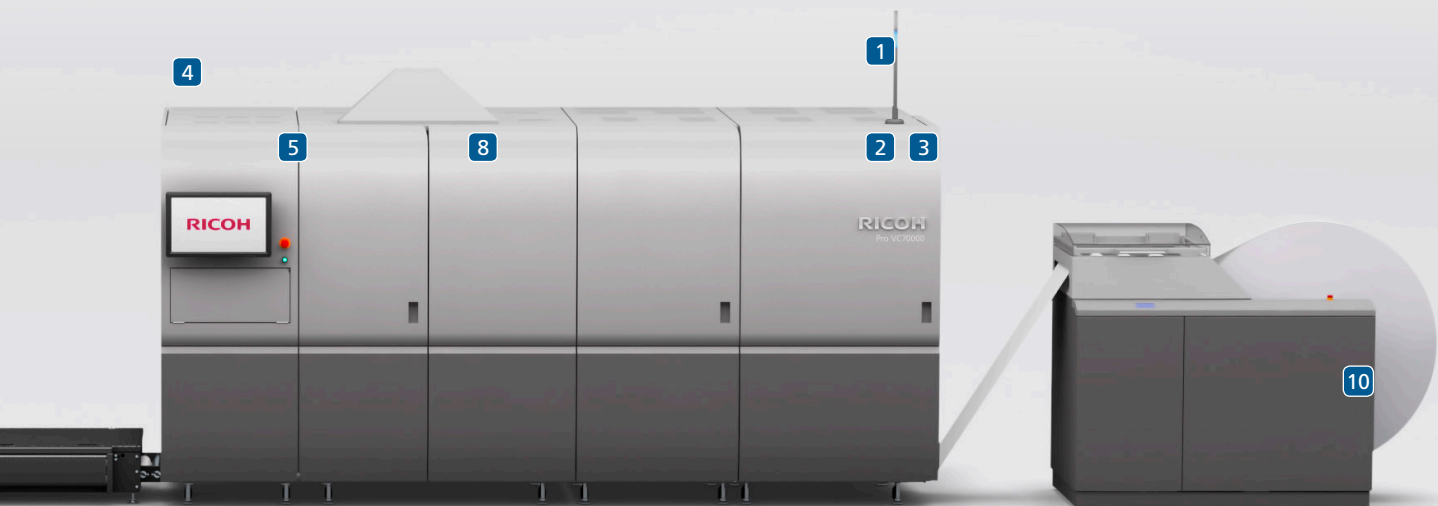


User-friendly design and operation

The RICOH Pro VC70000 doesn't just enable better results, it makes it easier to help your operators achieve them. In fact, the interface can be fine-tuned and customized to suit operators with a range of experience and technical expertise. The system's GUI provides intuitive control of the RICOH TotalFlow® Print Server R600A DFE. Access tools, such as job setup and management tools, plus administrative and maintenance menus quickly. An operator attention light clearly lets staff know, from anywhere on your shop floor, when the system needs intervention.



The RICOH TotalFlow® Print Server R600A Digital Front End is scalable to support a range of complex jobs.



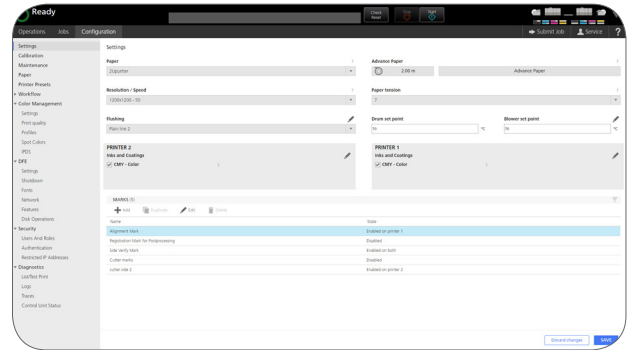
RICOH Pro VC70000



Ricoh's powerful digital front end delivers complete control

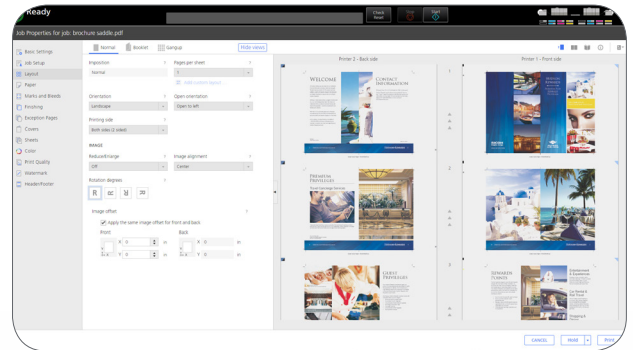
Set the interface to match your preferences

Tailor the user interface to your print preferences and make it even faster to access critical project information. Align print jobs by status, owner, submission time or other criteria. Add "Pods" to check supply status or to make on-the-fly configurations. Toggle between them with one-touch control. Add shortcuts to frequently used information and tasks to help multiple operators stay on the same page.



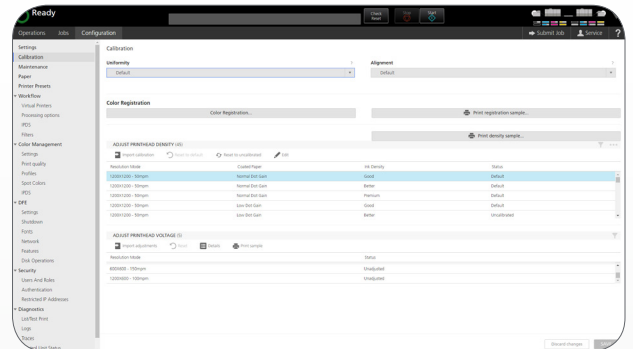
Automate repetitive tasks

Use the RICOH TotalFlow® Print Server R600A DFE to schedule and monitor jobs, check system status and transition to the next print stage seamlessly while reducing the critical touchpoints where errors can enter the process. Complete a wider range of projects, including on-demand orders, with higher quality and fewer mistakes to reduce costs and automate repetitive tasks to keep production moving faster.



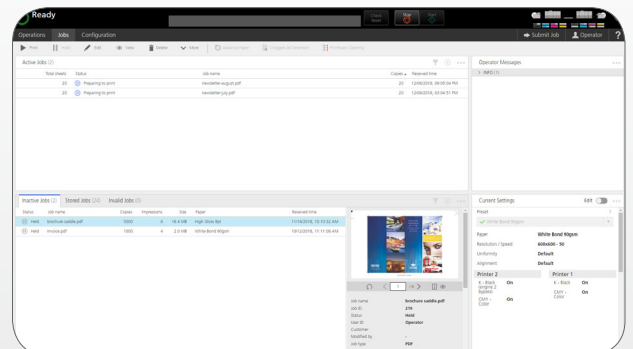
Perform production print tasks faster, more accurately

With the RICOH TotalFlow® Print Server R600A DFE, tackle even the most complex jobs, including variable addressing and variable images. Check status and errors with a single glance, and make changes or schedule maintenance in only moments. It accepts a wide range of native data streams — including PS, PDF, PDF/VT, AFP/IPDS and JDF — without requiring transforms which can affect file fidelity to help you complete jobs with incredible speed, accuracy and convenience.



Print and monitor jobs from anywhere

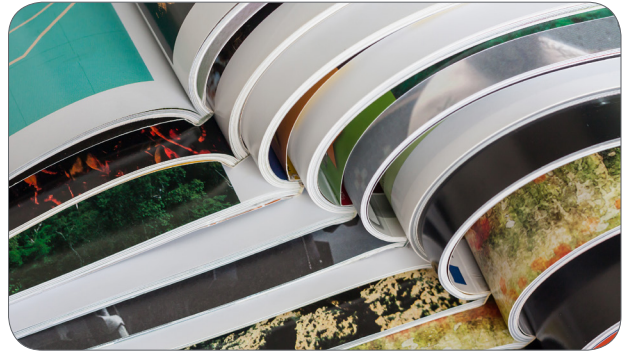
For ultimate convenience, the RICOH TotalFlow® Print Server R600A DFE makes it easy to print, monitor and manage your workflows from almost any location using the intuitive HTML job management console. Whether you're on the shop floor, at your desk or working remotely, you can access critical job information from a web browser. Check status, manage configurations, plan maintenance remotely and transition to the next job with fewer delays.



Utilize Ricoh solutions to customize and streamline your entire workflow

Group short-run work for improved efficiency and faster job turnarounds

RICOH TotalFlow® BatchBuilder™ is vendor-agnostic software that is ideal for shops that use XML, JDF, and/or PDF to organize incoming orders from MIS, web-to-print portals, homegrown platforms, and prepress systems. Batch jobs based on your criteria and use roll management capabilities for digital inkjet devices. The solution can also act as the production management queue for a web-to-print system.



Simplify complex workflows and reporting needs

RICOH ProcessDirector™ provides a robust, scalable software platform that streamlines and makes managing your entire production workflow faster — with fewer touchpoints for human error. Powerful data management tools connect to other solutions, including web-to-print and composition, making it easy to edit and update jobs on-the-fly, track individual job components at a page level, and create the reporting framework required for regulated communications.



Ricoh delivers more ways to help make significant ROI a reality

Our priority is ensuring that we match the right equipment to your workflows and provide the application support you're counting on. To help you visualize the economics of the RICOH Pro VC70000, your Ricoh representative will guide you through ROI estimates based on current and projected workflows. We take a deliberate, assessment-minded sales approach to ensure that this system is truly the right fit for your operations before you allocate budget dollars.



A partnership that extends beyond the shop floor

We've built a production organization designed to deliver everything your business needs to be more competitive, more efficient and more profitable. That includes dedicated, 24/7 nation-wide technical support to keep you up and running. From implementation services to ongoing color management, finishing, operator training, business development, postal optimization and beyond, our portfolio is firmly centered around helping you maximize your technology investment.



RICOH Pro VC70000

SYSTEM SPECIFICATIONS



Imaging Technology

Piezo Drop on Demand
Dynamic Variable Drop Size – @ 2 bits/drop
Stochastic Screening
Ricoh Printheads – 10 printheads per color

Engine Technology

Color Inkjet 4 colors CMYK,
Paper Path Tight Web
Web Width 20.5" (520.7 mm)
Printable Area – 20" (508 mm)
(non-printed area 2 mm from
paper edges)*

Paper Length 4" to 54" (101.6 to 1371.6 mm)
Machine Layout – Duplex "L" or Inline Configuration

Engine Components

Base Unit*
Dimensions (WxDxH) 168.9" (4290.5 mm) x 97.6"
(2478 mm) x 78.74" (2000 mm)
Weight 9321.1 lb (4228 kg)

Operating Environment

Temperature 64.4 – 75.2° F (18 – 24° C)
(recommended)
Humidity (recommended) 40 – 60%

Productivity

Resolution/Print speed 600 x 600 dpi : 492 feet/min*, or
150 meters/min
600 x 600 dpi : 394 feet/min, or
120 meters/min
1200 x 600 dpi: 246 feet/min and 328
feet/min, or 75 and 100 meters/min
1200 x 1200 dpi: 164 feet/min, or
50 meters/min
*max paper weight printing at
492 feet/min is 157gsm

Media Support

Media Types Plain, General Offset Coated* and
Uncoated, IJ coated, IJ treated, Ground-
Wood, Recycled
Paper Weight 40 gsm to 250 gsm

Supplies

Pro Ink Cartridge Black VC60000 Type D
Pro Ink Cartridge Cyan VC60000 Type D
Pro Ink Cartridge Magenta VC60000 Type D
Pro Ink Cartridge Yellow VC60000 Type D

Finishing

Specification 3rd party finishing devices I/F
specification: Type 1A/+
Finishing Solutions Multiple partners provide a variety of
unwind, rewind, cut, fold, dynamic
perforation, vision systems and
inline processing, including a solution
for books

RICOH TotalFlow R600A Digital Front End

Architecture

Processor Architecture Intel Xeon x64
OS Linux

Physical Characteristics

Dimensions (WxDxH) 39.5" (1003 mm) x 24" (609 mm) x
49" (1245 mm)
Weight 716.5 lb (325 kg)

Data Stream Support

PostScript
PDF (APPE)
PDF/VT
IPDS

Job Submission

FTP
SFTP
IPP
LPR
Raw Port
Operator Console
Virtual Printer/Hot Folder Support

Graphical User Interface

Display on each print engine
Login by Role: Admin, Operator, Maintenance or Customizable
Highly customizable user interface layout by role
Graphical Printer & Supplies Status
Operator Messages
Paper Catalog/Paper Setup

Job Management

Graphical Job Ticketing/Job Preview – Native JDF
Banner
Operator Comments
Sides Printed
Copies
Rotate, Reduce/Enlarge, Image Alignment
Special Marks
Job Imposition
Job Queue Management
Submit
Suspend
Hold
Process Next
Delete Job
View Jobs
Job Status
Active
Inactive
Stored
All Jobs
Job History

Color Management

ICC Profile Support
Enhanced Color Management by Side and Object Type
Device Link Support
Spot color dictionaries (Pantone, Toyo, DIC, and HKS)
CMR Support (AFP/IPDS)

Software Support

Ricoh ProcessDirector for AIX, Linux or Windows
Version 3.7 or later releases
TotalFlow BatchBuilder for Windows
Version 2.3
InfoPrint manager for AIX, Linux, Windows
Version 4.8 or later releases
Print Services Facility for AIX, Linux or Windows
Version 3.1 or later releases

Note: For Linux SLES, or, Red Hat

*For maximum performance and yield we recommend using genuine Ricoh parts and supplies.
Specifications are subject to change without notice.

RICOH
imagine. change.

www.ricoh-usa.com

Ricoh USA, Inc., 70 Valley Stream Parkway, Malvern, PA 19355, 1-800-63-RICOH
©2019 Ricoh USA, Inc. All rights reserved. Ricoh® and the Ricoh logo are registered trademarks of Ricoh Company, Ltd. All other trademarks are the property of their respective owners.
The content of this document, and the appearance, features and specifications of Ricoh products and services are subject to change from time to time without notice. Products are shown
with optional features. While care has been taken to ensure the accuracy of this information, Ricoh makes no representation or warranties about the accuracy, completeness or adequacy
of the information contained herein, and shall not be liable for any errors or omissions in these materials. Actual results will vary depending upon use of the products and services, and the
conditions and factors affecting performance. The only warranties for Ricoh products and services are as set forth in the express warranty statements accompanying them.

R4013